



**BIG SPAN**  
STRUCTURES

## ABOUT US

Big Span Structures offers concept-to-completion, highly customized: design, engineering, manufacturing, fabrication, and installation solutions for: tensile cable, frame supported, and air supported fabric-clad structures with a customer-focused service model. Big Span's Executive Management Team brings over a century of combined, highly-specialized knowledge & experience to the table. With a diverse skill set and collaborative, service-driven management style, Big Span Structures is uniquely positioned to outpace its competitors in the design and development of lightweight spanning structures, from the most basic to the highest levels of complexity.

In our 40-year history, Big Span has successfully installed over 500,000,000 ft<sup>2</sup> of structures globally. These range from sports complexes and stadiums to: cultural venues, hangars, amphitheaters, containment facilities, industrial complexes, shopping centers, hotels, commercial buildings, and a wide variety of architectural accents and upgrades such as facades, umbrellas, and walkways.

In appreciation of the fact that the best business investments are made in human capital and capabilities, Big Span employs a mixed staff of full-time employees and independent contractors, about 200 strong, with backgrounds, educations, and experiences from a multitude of different fields. We understand that experts must also be perpetual students in our field, therefore Big Span's concept and design team are constantly researching the latest market trends and familiarizing ourselves with cutting-edge techniques. As a result, Big Span's creative capability and state-of-the-art materials and techniques assure that we are completely unbound by conventional rules of geometry for self-supporting structures. What this means for Big Span's customers is that, as we often say, "If you can imagine it, we can bring it to life."

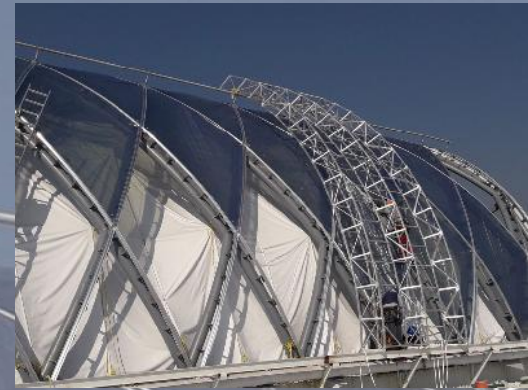
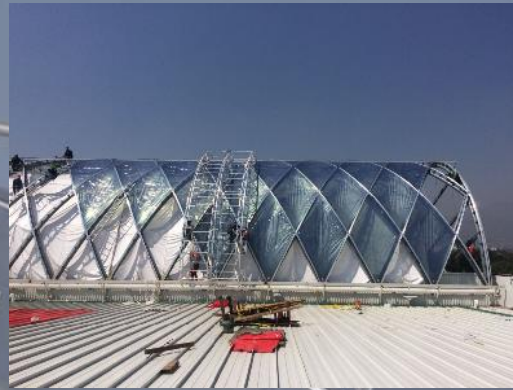
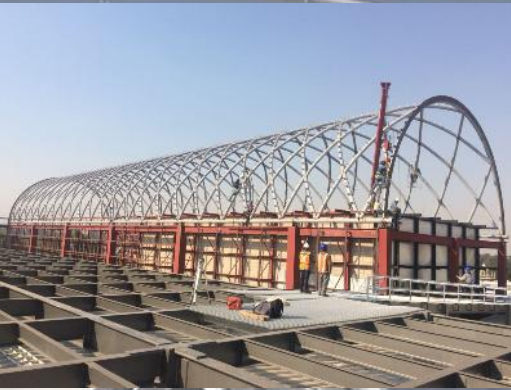
## ETFE STRUCTURES

ETFE (Ethylene Tetrafluoroethylene) film is durable, highly transparent and very lightweight in comparison to glass structures. ETFE is being considered the material of choice for traditional skylight applications to long span structures and building facades. Few building materials can match ETFE for its impact or presence when you want a structure that stands out from the crowd.

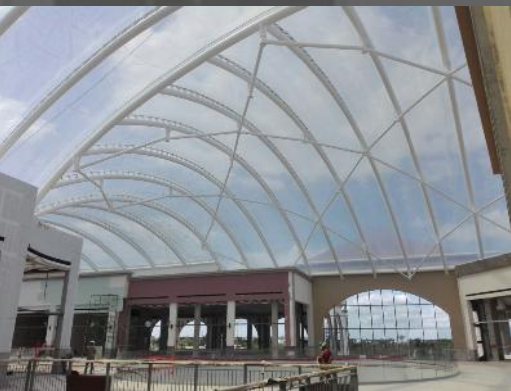
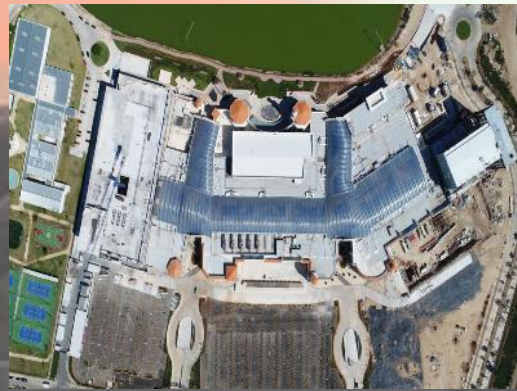
The raw granulate is extruded into sheets called foil or film with a density of 1.012 oz. per cubic inch. ETFE is one of the most lightweight and transparent cladding materials. Due to low coefficient of friction of its surface, dust or dirt will not stick onto the film. As the film is UV transparent, it will not discolor or structurally weaken over time. ETFE can also be recycled.



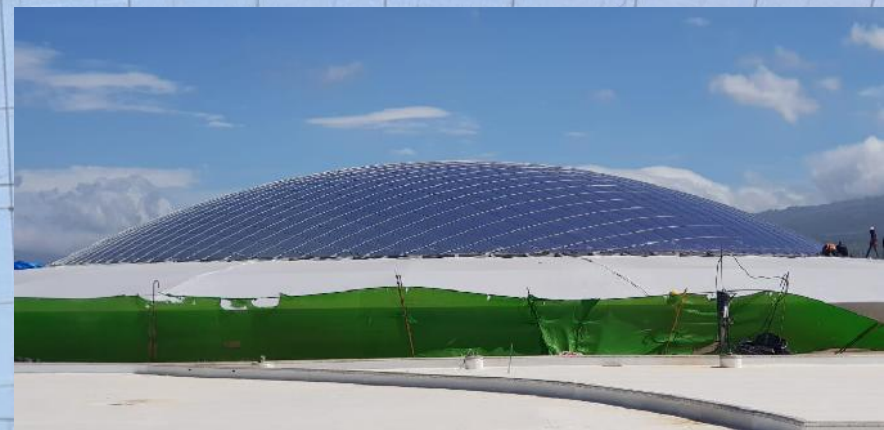
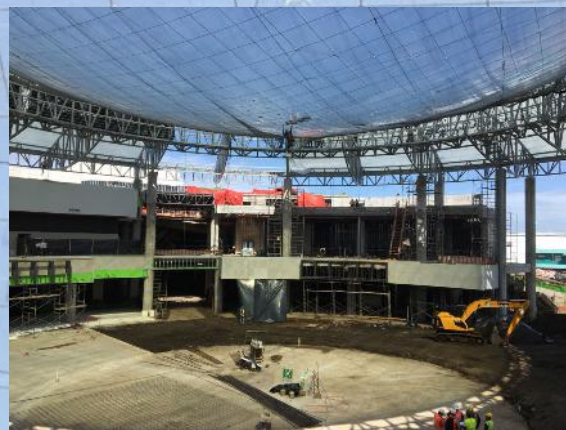
ETFE GALLERY - ACOXPAN, MX.



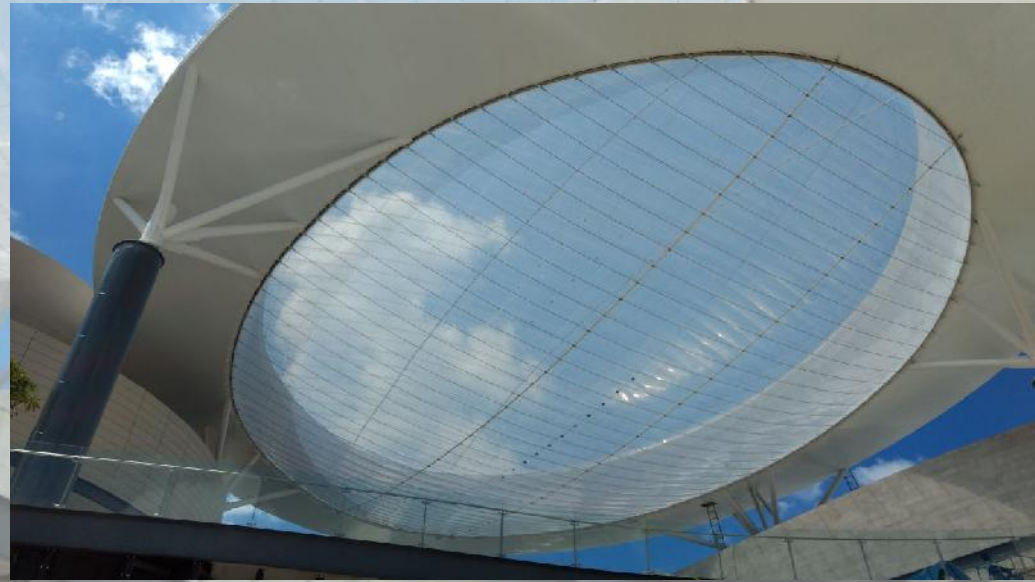
# ETFE GALLERY - MÉRIDA, MX.



ETFE GALLERY - COSTA RICA, CR.



ETFE GALLERY - QUERETARO, MX.



## OUR FABRIC WORKSHOP







**BIG SPAN**  
STRUCTURES

Big Span Structures LLC.  
1566 N. Meadowcrest Blvd  
Crystal River, FL. 34429

(352) 419 4890  
[www.bigspans.com](http://www.bigspans.com)